

NATIONAL SORRY DAY



May 24th 2024
10am -2pm

Walking Path information for those joining us for the Sorry Day Reconciliation Walk.

Here are the details:

- **Assembly Point:** Harry Sawkins Park, Nowra
- **Assembly Time:** 9:30 AM
- **Walk Start Time:** 10:00 AM

Route: From Harry Sawkins Park, we will walk over the Nowra Bridge following the walking path under the road to the other side of the highway. We will cross at the pedestrian lights on Bolong Road, continuing onto Brinawarr St and follow the footpath to Beinda St.

Accessibility: The walking path includes two short sets of stairs. For disabled access, follow the path crossing at Illaroo Road and the highway pedestrian crossing, then rejoin the group on Brinawarr St.

Please note: The Police will be on site to assist, but traffic will not be closed off.

If you would like further information or support please reach out to our team.

Please see the walking path map on the next page.

Provided by South Coast Medical Service Aboriginal Corporation in partnership with CBACH (Children of Bomaderry Aboriginal Childrens Home).



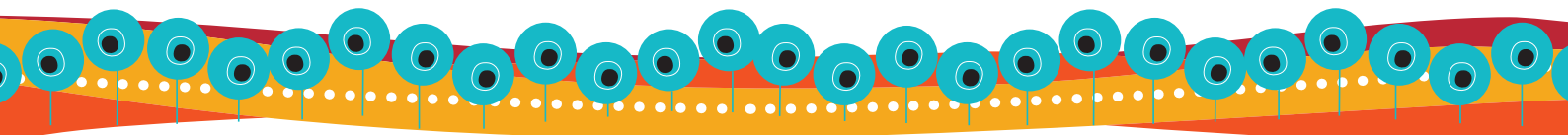
Walking Path Information.

Harry Sawkins Park

70 Graham St, Nowra NSW 2541

- ↑ Head north on Graham St
81 m
- ↪ Turn right
240 m
- ↪ Turn right onto Bridge Rd
110 m
- ↗ Slight right to stay on Bridge Rd
82 m
- ↖ Slight left onto Princes Hwy/A1
750 m
- ↪ Turn right onto Bolong Rd
94 m
- ↶ Turn left onto Brinawarr St
190 m
- ↖ Slight left
200 m
- ↶ Turn left onto Beinda St
110 m

59 Beinda St
Bomaderry NSW 2541



Provided by South Coast Medical Service Aboriginal Corporation in partnership with CBACH (Children of Bomaderry Aboriginal Childrens Home).

South Coast
Medical Service
Aboriginal Corporation



**NOW
MORE
THAN
EVER**
#NRW2024

- (02) 4448 0200 or 1800 215 099
- www.southcoastams.org.au
- intake@southcoastams.org.au